

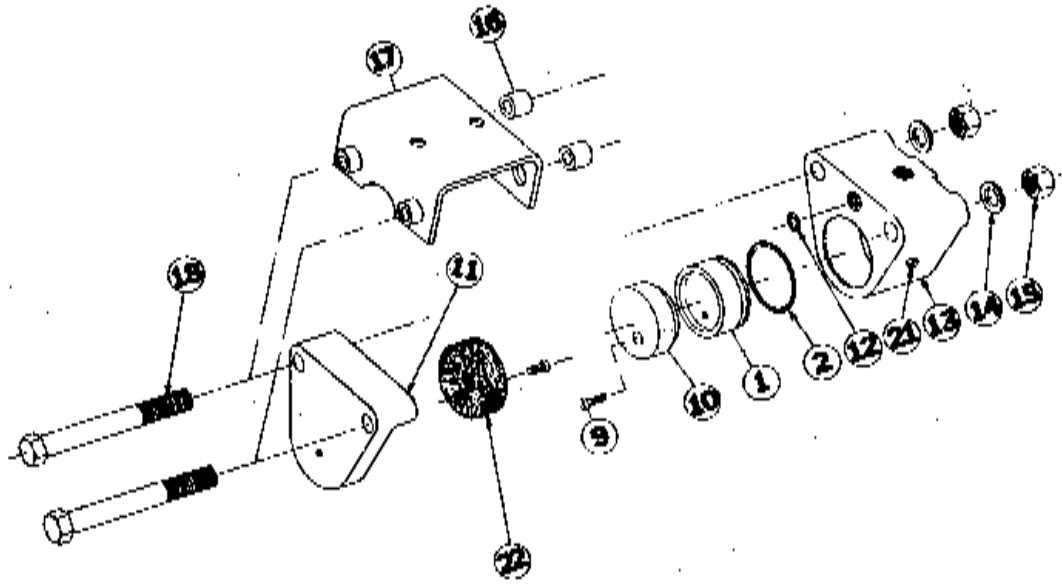
Caliper Disc Brakes

10 Series Hydraulic & Pneumatic

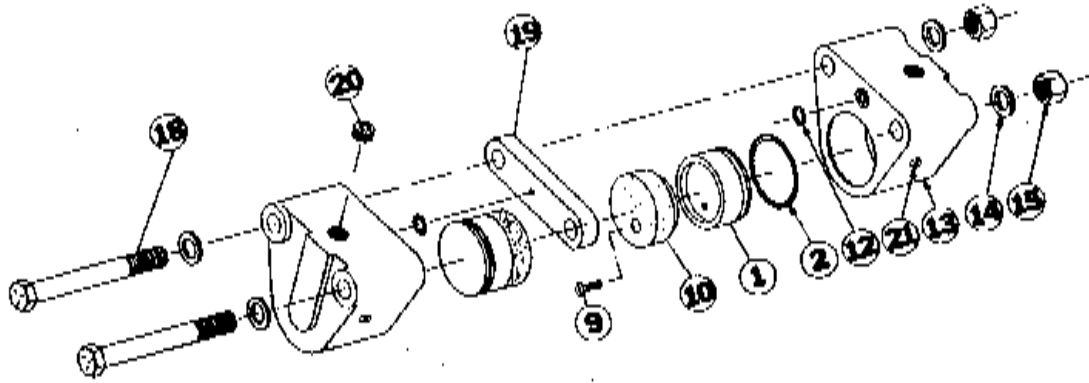
ITEM	PART NO.	DESCRIPTION	SINGLE-ACTING										DOUBLE-ACTING					DOUBLE-ACTING RETRACTABLE		
			MODEL NO.	P10SA	P10SB	P10SAF	P10SBF	H10SAC	H10SAFC	H10SACG	H10SBCG	H10SAFCG	P10DA	P10DB	H10DAC	H10DBC	H10DACG	H10DBCg	P10DAR	P10DBR
			ASSY. NO.	0705-0000	0703-0000	0705-0001	0703-0001	0705-0010	0705-0011	0705-0008	0703-0010	0705-0009	0701-0000	0702-0000	0701-0010	0702-0010	0701-0011	0702-0011	0708-0000	0709-0000
1.	0701-1062	PISTON	1	1	1	1	1	1	1	1	2	2	2	2	2	2				
2.	0701-1004	O-RING, BUNA-N	1	1	1	1	1	1			2	2	2	2			2	2		
	0701-1014	O-RING, EPR						1	1	1				2	2					
3.	0708-1002	PISTON, RETRACTABLE															2	2		
4.	0708-1009	SPRING, COMPRESSION															2	2		
5.	0708-1007	SCREW, SHOULDER															2	2		
6.	0708-1004	PLATE, SEAL															4	4		
7.	1001-1021	O-RING, BUNA-N															2	2		
8.	0708-1003	PUCK, RETRACTABLE															2	2		
9.	0701-1006	SCREW, FLAT HEAD SLOTTED	2	2	2	2	2	2	2	2	2	2	2	2	2	2	4	4		
10.	0701-1005	PUCK	1	1	1	1	1	1	1	1	2	2	2	2	2	2				
11.	0705-1001	HOUSING, DEAD SIDE	1	1	1	1	1	1	1	1										
12.	0701-1003	O-RING, BUNA-N									2	2	2	2			2	2		
	0701-1013	O-RING, EPR												2	2					
13.	0708-1001	HOUSING, PNEUMATIC, RETRACTABLE															2	2		
	0708-1055	HOUSING, PNEUMATIC	1	1	1	1														
	0708-1023	HOUSING, HYDRAULIC					1	1	1	1										
	0708-1056	HOUSING, PNEUMATIC									2	2								
	0708-1057	HOUSING, HYDRAULIC										2	2	2	2					
14.	0701-1007	WASHER	4	4			4		4	4		4	4	4	4	4	4	4		
15.	0701-1008	NUT, FLEXLOC	2	2	2	2	2	2	2	2	2	2	2	2	2	2	2	2		
16.	0707-1015	RING, SPACER			4	4		4		4										
17.	0705-1016	BRACKET			1	1		1		1										
18.	3030-1007	HEX BOLT	2	2			2		2	2										
	0708-1019	HEX BOLT			2			2		2										
	0701-1026	HEX BOLT				2														
	3030-1022	HEX BOLT									2	2	2	2	2	2	2	2		
19.	0701-1031	SPACER, "A" FOR 5/32 THICK DISC									1		1		1		1			
	0702-1032	SPACER, "B" FOR 1/4 THICK DISC										1		1		1		1		
	0742-1007	SPACER, "B" FOR 1/4 THICK DISC		1		1				1										
20.	1014-1065	PLUG, PIPE 1/8-27 NPT									1	1	1	1	1	1	1	1		
21.	0720-1099	SCREW, BLEEDER					2	2	2	2			4	4	4	4				
22.	0701-1032	PUCK, DEAD SIDE	1	1	1	1	1	1	1	1										

Note: If the caliper assembly number contains the suffix "G," order EPR seals only.

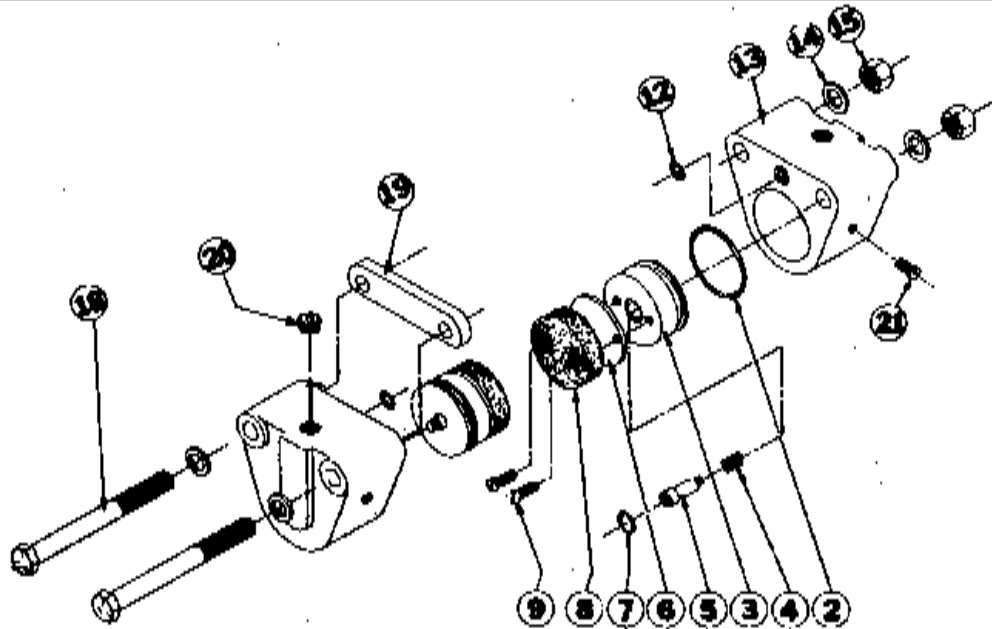
H 10S
P 10S



H 10D
P 10D



P10DR

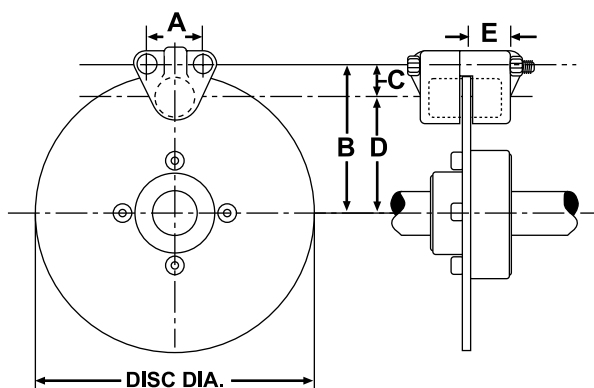


Note: Hydraulic models purchased prior to February 1, 1988, utilize O-Ring seals on bleeder screws. Hydraulic models purchased after that date use Nylon sealing washers.

10 Series Hydraulic & Pneumatic CDB Installation

1. Mount the Caliper Unit with the two SAE Grade 5 hex head bolts. See diagram for dimensions. Tighten nuts to 22 Ft.-Lbs. on 10 series. Care must be taken in mounting the calipers to be sure puck faces are parallel with the disc. Use shims if required. To prevent excessive wear, be sure disc does not rub against the pucks when they are retracted, or against the Housing.
2. The floating type disc must be free to move axially so that the moveable puck will push in against the springs and into the fixed puck, otherwise unequal wear or bending of the disc will result. The springs on the floating disc must be on the fixed puck side of the caliper. Proper clearance between the Puck and Disc is .010" minimum per side to a maximum of .031" per side when new.
3. Discs must be free of dirt and grease for maximum life and braking action.
4. (H)(P)10D and (H)(P)10DR double-acting brakes have internal porting between the two cylinder housings making it necessary to run only one fluid line to the caliper assembly.
5. Pneumatically operated brakes must be connected to a source of clean, dry, filtered air at a pressure not to exceed 150 PSI. The use of an in-line mist lubricator is recommended to provide a very slight amount of lubrication. Any mineral base lubricating oil compatible with Buna-N Seals may be used.
6. Hydraulically operated brakes may be operated at pressures up to 1000 PSI using a petroleum base hydraulic fluid compatible with Buna-N Seals. If caliper has a suffix "G", use automotive brake fluid only. Also, when replacing seals, if automotive brake fluid is being used order EPR seals.
7. When plumbing the fluid system, use a minimum amount of pipe thread sealant on joints to prevent the sealant from entering the system.
8. Pressure in the brake cylinder must be relieved when the brake is off. This can be accomplished by using a three-way control valve. Any back pressure in the cylinder will cause drag and excess heat which will result in reduced puck life. If used with master cylinders, residual pressure checks must be removed.
9. The hydraulic type brakes are bled by loosening bleeder screw/screws at high point of brake cylinder, causes sluggish braking operation. Note: Do not pressure bleed with more than 5 PSI.

Mounting Dimensions



HP10 Brakes (Hydraulic/Pneumatic)

DISC SIZE (IN.)	HP 10 SERIES				
	A	B	C	D	E*
6-5/16	1-5/8	3-15/32	15/16	2-17/32	1-5/32
8	1-5/8	4-5/16	15/16	3-3/8	1-5/32
10	1-5/8	5-5/16	15/16	4-3/8	1-5/32
12	1-5/8	6-5/16	15/16	5-3/8	1-5/32
16	1-5/8	8-5/16	15/16	7-3/8	1-5/32

*Caliper mounting surface nearest to surface of disc.

Tolomatic[™]
EXCELLENCE IN MOTION

3800 County Road 116, Hamel, MN 55340 USA
<http://www.Tolomatic.com> • Email: Help@Tolomatic.com
 Phone: (763) 478-8000 • Fax: (763) 478-8080 • Toll Free: 1-800-328-2174

© 2022 Tolomatic 202202171010

COMPANY WITH
QUALITY SYSTEM
CERTIFIED BY DNV GL
= ISO 9001 =

All brand and product names are trademarks or registered trademarks of their respective owners. Information in this document is believed accurate at time of printing. However, Tolomatic assumes no responsibility for its use or for any errors that may appear in this document. Tolomatic reserves the right to change the design or operation of the equipment described herein and any associated motion products without notice. Information in this document is subject to change without notice.

Visit www.tolomatic.com for the most up-to-date technical information