

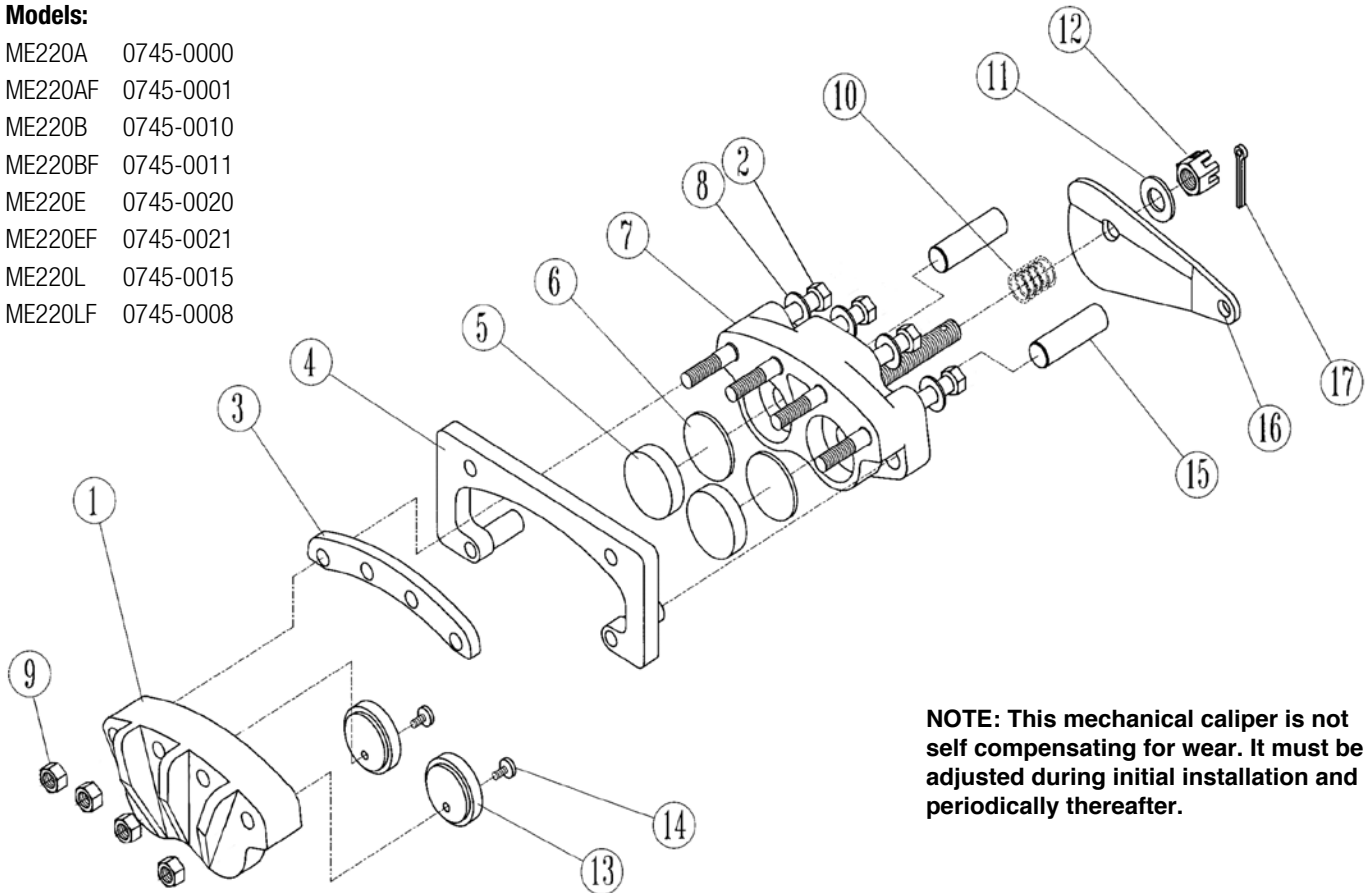
Mechanical Caliper Disc Brake

ME220 SERIES

Die Cast Aluminum

Models:

ME220A	0745-0000
ME220AF	0745-0001
ME220B	0745-0010
ME220BF	0745-0011
ME220E	0745-0020
ME220EF	0745-0021
ME220L	0745-0015
ME220LF	0745-0008



NOTE: This mechanical caliper is not self compensating for wear. It must be adjusted during initial installation and periodically thereafter.

Parts List

ITEM	PART NO.	DESCRIPTION	0745-0000 / ME220A	0745-0001 / ME220AF	0745-0010 / ME220B	0745-0011 / ME220BF	0745-0020 / ME220E	0745-0021 / ME220EF	0745-0015 / ME220L	0745-0008 / ME220LF
1	0733-1068	Dead Side Housing	1	1	1	1	1	1	1	1
2	0732-1106	Hex Head Bolt	4	4	4	4	-	-	-	-
	0724-1105	Hex Head Bolt	-	-	-	-	4	4	4	4
3	0733-1022	"B" Spacer	-	-	1	1	-	-	-	-
	0733-1023	"E" Spacer	-	-	-	-	1	1	-	-
	0733-1042	"L" Spacer	-	-	-	-	-	-	1	1
4	0734-9001	Floating Bracket	-	1	-	1	-	1	-	1
5	0720-1010	Puck, Live Side	2	2	2	2	2	2	2	2
6	0745-1009	Back Plate	2	2	2	2	2	2	2	2
7	0701-1020	Live Side Housing	1	1	1	1	1	1	1	1

ITEM	PART NO.	DESCRIPTION	0745-0000 / ME220A	0745-0001 / ME220AF	0745-0010 / ME220B	0745-0011 / ME220BF	0745-0020 / ME220E	0745-0021 / ME220EF	0745-0015 / ME220L	0745-0008 / ME220LF
8	0720-1011	Washer	4	4	4	4	4	4	4	4
9	0720-1008	Lock Nut	4	4	4	4	4	4	4	4
10	0745-1007	Compression Spring	1	1	1	1	1	1	1	1
11	0733-1149	Washer	1	1	1	1	1	1	1	1
12	0745-1068	Nut, Castle	1	1	1	1	1	1	1	1
13	0720-1024	Puck, Friction	2	2	2	2	2	2	2	2
14	0720-1026	Screw	2	2	2	2	2	2	2	2
15	0701-1011	Actuating Pin	2	2	2	2	2	2	2	2
16	0701-1021	Lever Cam	1	1	1	1	1	1	1	1
17	0745-1069	Cotter Pin	1	1	1	1	1	1	1	1

NOTE: The Model Number letter suffixes mean the following:

F: Floating Mount Bracket, A: Designed for 5/32" thick disc, B: Designed for 1/4" thick disc, E: Designed for 1/2" thick disc, L: Designed for 3/8" thick disc.

INSTALLATION FOR BRAKES WITHOUT THE FLOATING MOUNTING BRACKET:

1. Mount the caliper disc brake unit with four [4] SAE grade 8 hex head bolts (#2). See the diagram below for proper dimensions. Tighten the nuts to 480 in-lbs (54.23 N-m).

INSTALLATION FOR BRAKES WITH THE FLOATING MOUNTING BRACKET:

1. Slip the Brake Housing over the disc and fasten the bracket with two [2] 3/8-inch diameter bolts.
2. When mounting the brake, be certain that the puck faces are parallel with the disc. Proper clearance between the pucks and disc is from a minimum of 0.010 in (0.25 mm) to a maximum of 0.031 in (0.79 mm) per side when new.
3. To prevent excessive wear, be certain the disc does not rub against the brake housing or the pucks when they are in the retracted position.
4. The floating type disc must be free to move axially so the moveable pucks will push it against the fixed pucks, otherwise uneven wear will result.
5. Disc must be free of dirt and grease for maximum life and braking performance.
6. For best results, linkages, when attached, should form a 90° angle with Lever (#16).
7. **The maximum allowable lever force is 580 lbf (2,580 N).**

MAINTENANCE INSTRUCTIONS:

1. Disconnect the brake linkage from the cam Lever (#16).
2. Unbolt the brake from its mountings, and remove the four [4] Hex Head Bolts (#2) holding the unit together.
3. Remove the Pan Head Screws (#14) from the Friction Pucks (#13) and remove the worn Pucks from the Dead Side Housing (#1).
4. Install the new Friction Pucks (#13) with the Pan Head Screws (#14), covering the threads with Loctite® No. 271 and torquing them to 20 in-lbs (2.26 N-m).
5. Reassemble the brake using four Hex Head Bolts (#2), Washers (#8) and Lock Nuts (#9), torquing to 480 in-lbs (54.23 N-m). Follow the instructions above to complete installation.

Loctite® is a registered trademark of the Loctite Corporation, www.loctite.com.

ME220 SERIES (Figure #1 dimensions in inches)

DISC DIA.	A	B	C	D
6.313	2.13	3.07	3.45	4.30
8	3.00	3.94	4.32	5.17
10	4.00	4.94	5.32	6.17
12	5.00	5.94	6.32	7.17
16	7.09	8.03	8.41	9.26

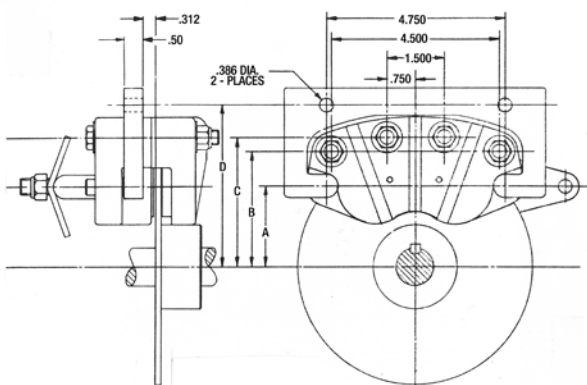


FIGURE #1

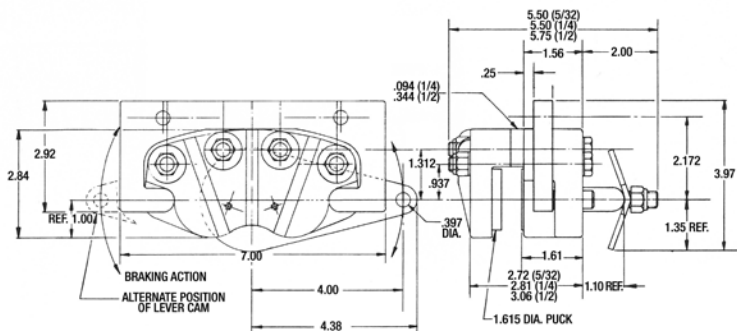


FIGURE #2



3800 County Road 116, Hamel, MN 55340
 http://www.Tolomatic.com • Email: Help@Tolomatic.com
 Phone: (763) 478-8000 • Fax: (763) 478-8080 • Toll Free: 1-800-328-2174



Information furnished is believed to be accurate and reliable. However, Tolomatic assumes no responsibility for its use or for any errors that may appear in this document. Tolomatic reserves the right to change the design or operation of the equipment described herein and any associated motion products without notice. Information in this document is subject to change without notice.