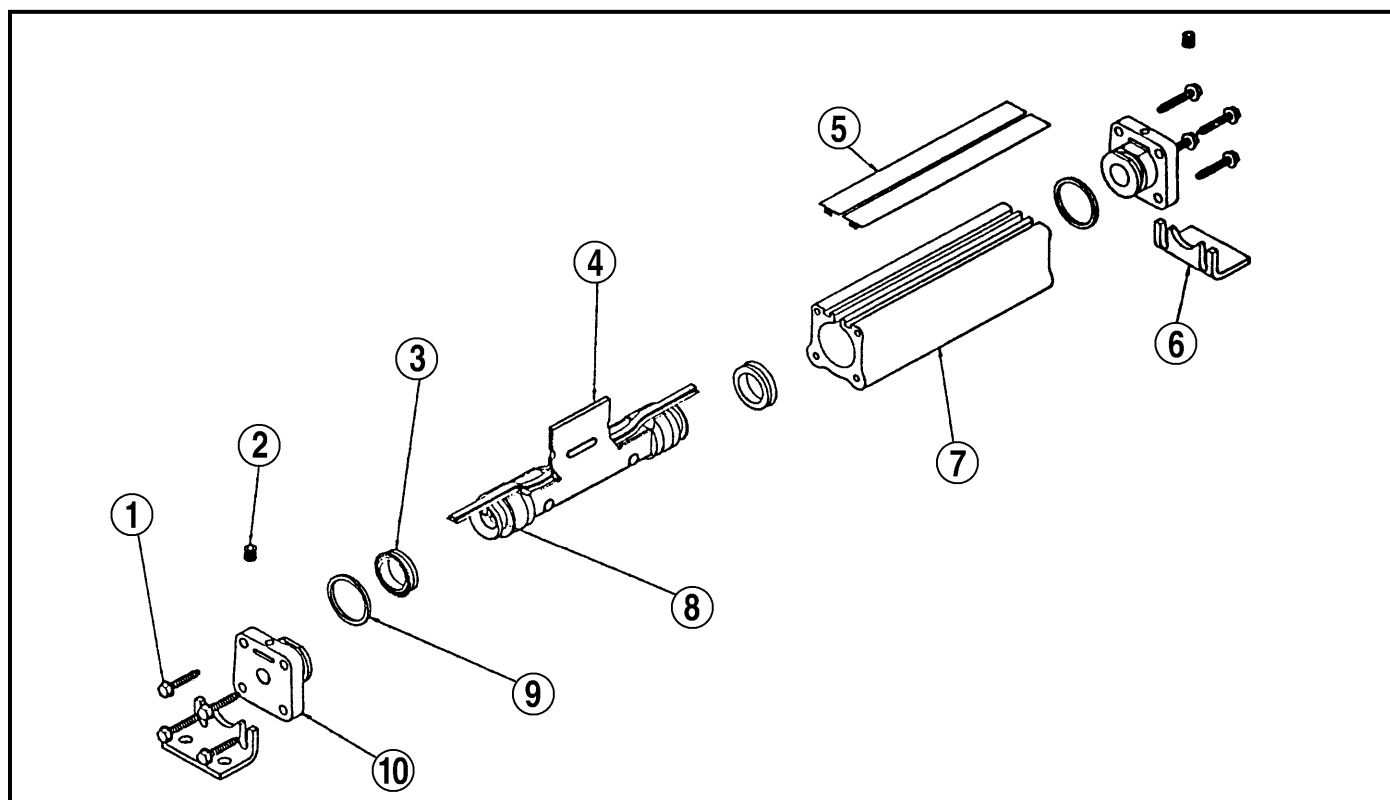


LC100 Band Cylinder®

Assembly Number 0910-0023

(12-20-2019) DISCONTINUED PRODUCT
STYLE OR SIZE. PARTS SHEET IS FOR
REPAIR INSTRUCTIONS ONLY.

Parts listing is for reference only. All parts
listed are limited to stock on hand. Contact
Tolomatic regarding availability.



List of Parts

ITEM	PART NO.	DESCRIPTION	QUANTITY
1.	0910-1329	Screw, Tapping 8 - 32 x 1.0"	8
2.	1825-1034	Screw, Set 10 - 24 x 1/4"	2
*3.	0910-1206	U-Cup	2
4.	0910-9059	Piston / Bracket Assembly	1
*5.	0910-1325	Rubber Dust Protector	2
6.	0910-1080	Bracket, Mounting	2
7.	0910-1322	Tube	1
*8.	0910-9063	Band, Sealing	1
*9.	0910-1148	O-Ring, Buna-N	2
10.	0910-1318	Head Assembly	2

* Included in Repair Kit 0910-9066

Model LC100 Maintenance, Assembly and Disassembly Instructions

DISASSEMBLY

1. Remove Band Cylinder from machinery.
2. Loosen Set Screws (#2).
3. Remove the four (4) Screws (#1) to free Heads (#10).
4. Remove two (2) Rubber Dust Protectors (#5).
5. Slide Piston / Bracket Assembly (#4) out of the end of Cylinder Tube (#7).
6. Remove the Sealing Band (#8) by passing a screwdriver or similar tool through the slot in the Cylinder Tube (#7) to dislodge the band from the Tube. (Take care in doing this step to make certain that NO SCRATCHES ARE MADE in the tube bore or slot).

ASSEMBLY

1. Thoroughly clean all components, particularly the tube bore and slot. CAREFULLY LUBRICATE THE TUBE AND ALL RUBBER PARTS WITH MAGNALUBE® GREASE.
2. Insert new Sealing Band (#8) into the cylinder tube (with the rubber portion facing up into the slot), centering the Band along its entire length.

CAUTION: THE METAL EDGES OF THE BAND ARE VERY SHARP. EXERCISE CAUTION TO AVOID INJURY EITHER TO YOURSELF OR THE BAND AND TUBE WHEN INSERTING BOTH THE INNER AND OUTER BANDS.

3. Install new U-Cups (#3) onto the Piston / Bracket Assembly (#4).
4. Insert Piston / Bracket Assembly (#4) into Cylinder tube (#7), passing Sealing Band (#8) through the Piston / Bracket Assembly.
5. Push the Piston / Bracket Assembly (#4) along the length of the Cylinder Tube (#7) to force the Sealing Band into the sealing position.
6. Install new O-rings (#9) onto the Head (#10) and insert into the Cylinder Tube (#7), passing the Sealing Band (#8) through slot in the Head (#10). Sealing Band (#8) should be approximately flush with outside of Head (#10). Insert four(4) Screws (#1) and tighten while installing Mounting Bracket (#6).
7. Slide Piston / Bracket Assembly (#4) to the end of the Cylinder Tube (#7) with the Head (#10) installed, and back to the other end. Repeat step number 6.
8. Install the two (2) Set Screws (#2) and tighten to lock the Sealing Band (#8) in place.
9. Install the two (2) Rubber Dust Protectors (#5) by pressing into dovetail slots in the top of the Tube (#7).
10. Run the Piston / Bracket Assembly (#4) back and forth along the full stroke length by hand to confirm the unit is properly assembled before applying air.
12. Remount the cylinder on the machinery it was taken from.

Magnalube®-G is a registered trademark of the Carleton-Stuart Corporation, www.magnalube-g.com

Tolomatic[™]
EXCELLENCE IN MOTION

3800 County Road 116, Hamel, MN 55340 USA
<http://www.Tolomatic.com> • Email: Help@Tolomatic.com
Phone: (763) 478-8000 • Fax: (763) 478-8080 • Toll Free: 1-800-328-2174

COMPANY WITH
QUALITY SYSTEM
CERTIFIED BY DNV GL
= ISO 9001 =

All brand and product names are trademarks or registered trademarks of their respective owners. Information in this document is believed accurate at time of printing. However, Tolomatic assumes no responsibility for its use or for any errors that may appear in this document. Tolomatic reserves the right to change the design or operation of the equipment described herein and any associated motion products without notice. Information in this document is subject to change without notice.