

RODLESS CABLE CYLINDERS

Tolomatic invented the first-ever rodless cylinder in 1956 - the cable cylinder. Initially designed into the Tolomatic bagger/sealer for the flour industry, the cable cylinder continues to power applications in the 21st century. Built-to-order in stroke lengths up to 282 inches (7,163 mm).

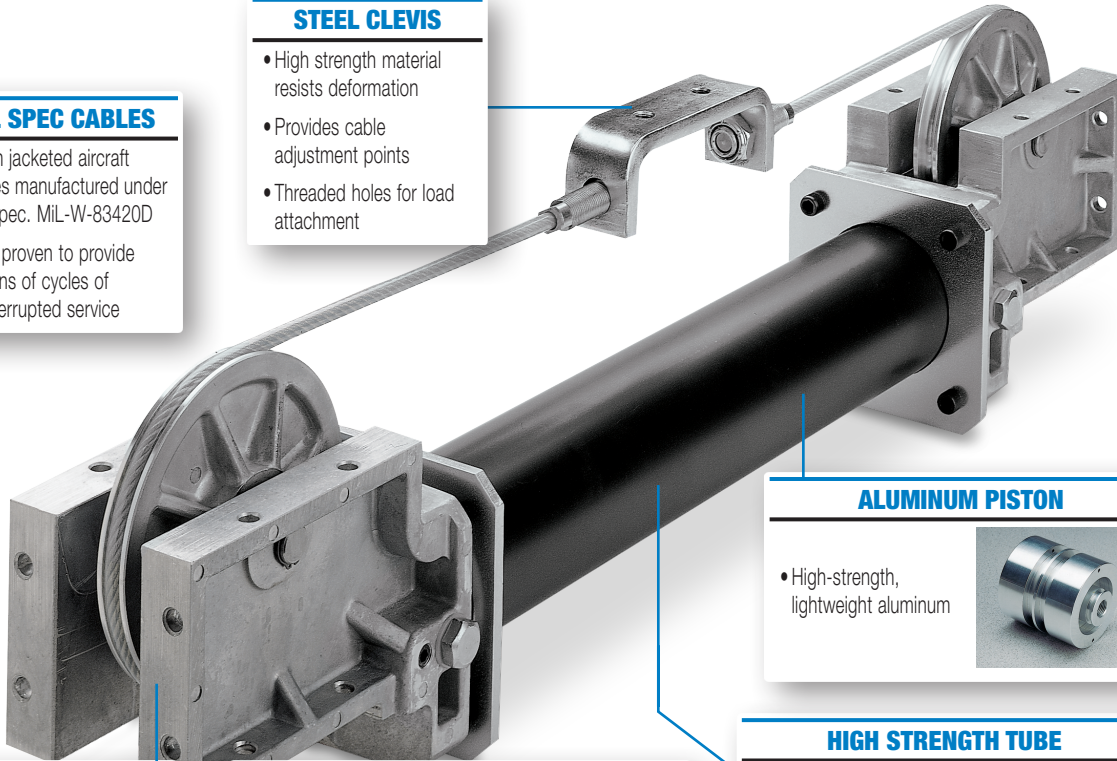
DOUBLE ACTING CABLE CYLINDER

MIL SPEC CABLES

- Nylon jacketed aircraft cables manufactured under Mil Spec. MIL-W-83420D
- Field proven to provide millions of cycles of uninterrupted service

STEEL CLEVIS

- High strength material resists deformation
- Provides cable adjustment points
- Threaded holes for load attachment



ALUMINUM PISTON

- High-strength, lightweight aluminum



DIE CAST HEAD ASSEMBLY

- High-strength, lightweight anodized aluminum
- Allows for use of hydraulic or pneumatic use
- Multiple port and mounting options

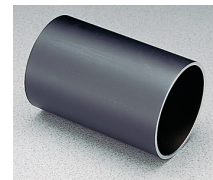
PATENTED GLAND SEALS

- Leak-free seal for cables to pass through
- Easy installation
- Snap In/Out cable seals or encapsulated gland seals depending on bore size



HIGH STRENGTH TUBE

- High-strength, lightweight, black anodized aluminum or painted steel



Additional Models:

SINGLE ACTING CABLE CYLINDER



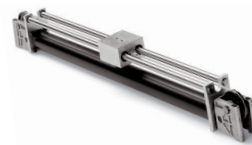
- Use in vertical applications when double acting cable cylinder is not required
- Can be positioned horizontally and achieve vertical movement

DOUBLE PURCHASE CABLE CYLINDER



- Doubles the velocity and stroke capacity of cable cylinder without increasing space requirements
- Isolates cylinder from harsh environments

TRACK CABLE CYLINDER



- Guides and supports load
- Precision linear ball bearings on hardened ground steel shafts

Applications:

- Packaging
- Automotive
- Food & Beverage
- Material Handling & Conveying
- Plastic Injection Molding
- Metal Processing
- Paper and Textiles
- Medical
- Electronics
- Printing
- Entertainment and Many

RODLESS CABLE CYLINDERS

CC DOUBLE-ACTING



SOLUTION FOR:

- Loads that are externally guided and supported

SA SINGLE-ACTING



SOLUTION FOR:

- Used where gravity supplies return force
- Loads that are externally guided and supported

DP DOUBLE-PURCHASE



SOLUTION FOR:

- Effectively doubles the stroke length and speed
- Loads that are externally guided and supported

TC TRACK- GUIDE RODS & BEARING



SOLUTION FOR:

- Guiding and supporting light loads

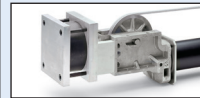
STANDARD FEATURES:

- Aircraft grade nylon jacketed cables
- Unique gland seals provide leak free seal for cables
- Adjustable internal end-of-stroke cushions
- Actuator may be located remotely from load and contamination
- Stroke lengths up to 60 feet with optional tube couplers
- Lightweight aluminum design

CABLE CYLINDER SPECIFICATIONS:

	CC	05	07	10	15	20	25	30	40	50	52
	SA	—	07	10	15	20	25	30	40	50	52
	DP	—	—	—	15	20	25	30	40	—	52
	TC	05	07	10	15	—	—	—	—	—	—
BORE SIZE	in	0.50	0.75	1.00	1.50	2.00	2.50	3.00	4.00	5.00	2.00
	mm	13	19	25	38	51	64	76	102	127	51
MAX. STROKE	in	54	138	282	280	281	281	280	279	134	280
	mm	1372	3505	7163	7112	7137	7137	7112	7087	3404	7112
MAX. FORCE	lbf	19	43	78	174	618	972	1398	1249	1919	1532
	N	85	191	347	774	2749	4324	6219	5556	8536	6815

AVAILABLE OPTIONS



AUTO TENSIONER*

- Maintains proper cable tension
- Maximizes service life of both cable and seals



CALIPER DISC BRAKE*

- Best mounting choice in most applications



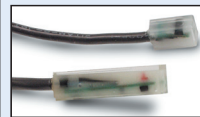
STEEL TUBE

- For extra strength & use in harsh environments



3 PORTED HEAD

- For convenient air connection



SWITCHES

- Available in Reed and Triac
- 15ft. cable with flying leads; available with quick-disconnect couplers



SEALS OF VITON® MATERIAL

- Long lasting seal option
- High temperature applications
- High temperature applications



EXTRA CABLE

- To remotely locate cable cylinder

*Not available for SA

TolomaticTM
EXCELLENCE IN MOTION

COMPANY WITH
QUALITY SYSTEM
CERTIFIED BY DNV GL
= ISO 9001 =
Certified site: Hamel, MN

USA

Tolomatic Inc.
3800 County Road 116
Hamel, MN 55340, USA
Phone: (763) 478-8000
Fax: (763) 478-8080
Toll-Free: **1-800-328-2174**
sales@tolomatic.com
www.tolomatic.com

CHINA

Tolomatic Automation Products (Suzhou) Co. Ltd.
(ServoWeld® inquiries only)
No. 60 Chuangye Street, Building 2
Huqiu District, SND Suzhou
Jiangsu 215011 - P.R. China
Phone: +86 (512) 6750-8506
Fax: +86 (512) 6750-8507
ServoWeldChina@tolomatic.com

EUROPE

Tolomatic Europe GmbH
Elisabethenstr. 20
65428 Rüsselsheim
Germany
Phone: +49 6142 17604-0
help@tolomatic.eu

All brand and product names are trademarks or registered trademarks of their respective owners. Information in this document is believed accurate at time of printing. However, Tolomatic assumes no responsibility for its use or for any errors

that may appear in this document. Tolomatic reserves the right to change the design or operation of the equipment described herein and any associated motion products without notice. Information in this document is subject to change without notice.

Visit www.tolomatic.com for the most up-to-date technical information