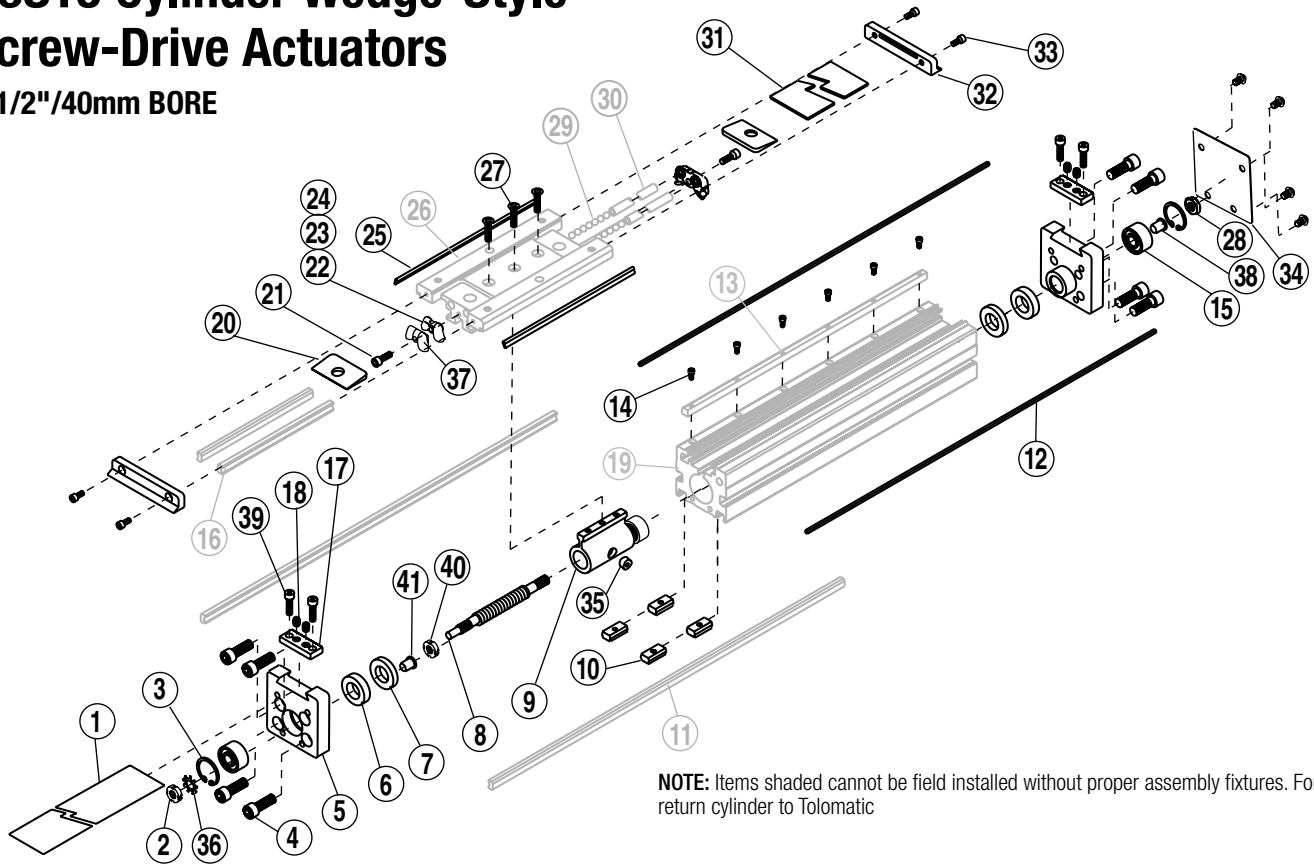


B3S15 Cylinder Wedge-Style Screw-Drive Actuators

1-1/2"/40mm BORE

Replaced 3600-4042

3600-4122_24



NOTE: Items shaded cannot be field installed without proper assembly fixtures. For repair, return cylinder to Tolomatic

| ITEM | PART NO. OR CONFIG. CODE | DESCRIPTION | US CONV (SK) | | | | | METRIC (SM) | | | | | | |
|------|--------------------------|-------------------------|--------------|-------|------|--------|------|-------------|------|-------|------|------|-------|---|
| | | | BN02 | BNL02 | SN02 | SNAD02 | BN05 | BNL05 | SN01 | SN25* | SN12 | BN05 | BNL05 | |
| 1,21 | NDBB3S15_SK_ | DUST BAND (US CONV) | A/R | A/R | A/R | A/R | A/R | A/R | A/R | | | | | |
| | NDBB3S15_SM_ | DUST BAND (METRIC) | | | | | | | A/R | A/R | A/R | A/R | | |
| 2. | 1124-1082 | SPHERICAL NUT | 1 | 1 | | | | | 1 | | | | | |
| | 1132-1013 | SPHERICAL NUT | | | 1 | 1 | 1 | 1 | 1 | 1 | 1 | 1 | | |
| 3. | 3415-1307 | SNAP RING | 2 | 2 | 2 | 2 | 2 | 2 | 2 | 2 | 2 | 2 | | |
| 4. | 1004-1064 | SOCKET HEAD CAP SCREW | 8 | 8 | 8 | 8 | 8 | 8 | 8 | | | | | |
| | 4420-1002 | SOCKET HEAD CAP SCREW | | | | | | | 8 | 8 | 8 | 8 | | |
| 5. | 3415-1300 | ACTUATOR HEAD (US CONV) | 2 | 2 | 2 | 2 | 2 | 2 | | | | | | |
| | 4415-1300 | ACTUATOR HEAD (METRIC) | | | | | | | 2 | 2 | 2 | 2 | | |
| 6. | 3415-1308 | SPACER | 1 | 1 | | | | | | | | | 1 | 1 |
| | 3415-1309 | SPACER | | | | | 1 | 1 | | | | | | |
| | 3415-1310 | SPACER | | | 1 | | | 1 | 1 | 1 | | | | |
| | 3415-1312 | SPACER | 1 | 1 | 1 | 1 | 1 | 1 | 1 | 1 | 1 | 1 | 1 | 1 |
| | 3415-1315 | SPACER | | | | | 1 | | | | | | | |
| 7. | 3415-1318 | BUMPER | 2 | 2 | 2 | 2 | 2 | 2 | 2 | 2 | 2 | 2 | 2 | |

| ITEM | PART NO. OR CONFIG. CODE | DESCRIPTION | US CONV (SK) | | | | | METRIC (SM) | | | | | | |
|------|--------------------------|-------------------------------|--------------|-------|------|--------|------|-------------|------|-------|------|------|-------|---|
| | | | BN02 | BNL02 | SN02 | SNAD02 | BN05 | BNL05 | SN01 | SN25* | SN12 | BN05 | BNL05 | |
| 3,8. | RLSB3S15_SK_ | LEAD SCREW (US CONV) | A/R | A/R | A/R | A/R | A/R | A/R | A/R | | | | | |
| | RLSB3S15_SM_ | LEAD SCREW (METRIC) | | | | | | | A/R | A/R | A/R | A/R | | |
| 9. | 3415-9062 | NUT BRACKET ASSY, 1TPI | | | | | | | 1 | | | | | |
| | 3415-9063 | NUT BRACKET ASSY, 2TPI | | | | | | | | | | | | |
| 9. | 3415-9064 | NUT BRKT ASSY, 2TPI, BALL, AB | | | | | | | | 1 | | | | |
| | 3415-9065 | NUT BRACKET ASSY, 5TPI, BALL | | | | | | | | | 1 | 1 | | |
| | 3415-9066 | NUT BRACKET ASSY, 2TPI, BALL | 1 | | | | | | | | | | | |
| | 3415-9067 | NUT BRACKET ASSY, 2TPI, AB | | | | | | | | | 1 | | | |
| | 4415-9027 | NUT BRKT ASSY, 12MM LEAD | | | | | | | | | | 1 | | |
| | 4415-9028 | NUT BRKT ASSY, 25MM LEAD | | | | | | | | | | 1 | | |
| | 4415-9029 | NUT BRACKET ASSY, 5MM LEAD | | | | | | | | | | | 1 | 1 |

¹ Available in Repair Kit No. 3415-9049

A/R = As Required

*SN25 is discontinued

² Replacement Dust Band ordering method: **NDBB3S15** **D** **SK** **□□□□** **DC** **□**

EXAMPLE: **NDBB3S15** **D** **SK** **21.25** **DC** **7**

³ Replacement Lead Screw ordering method: **RLSB3S15** **□□□□** **SK** **□□□□** **LM** **I** **Y** **M** **□□□□** **DC** **□**

EXAMPLE: **RLSB3S15** **BN02** **SK** **21.25** **LM** **I** **Y** **M** **OTBD0** **DC** **□**

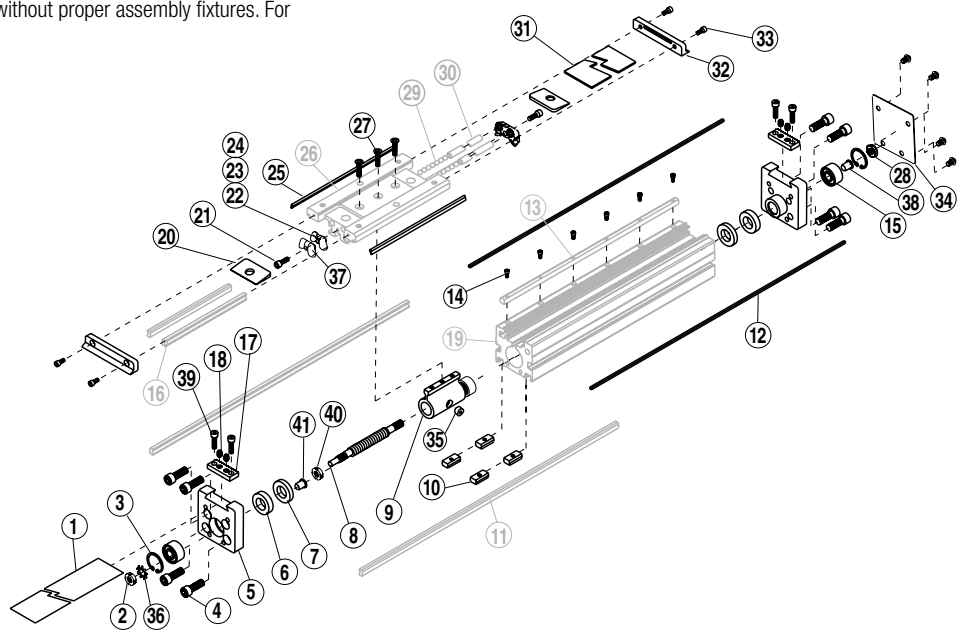
Lead Screw Model & Size Nut Style & Size Stroke Length Motor Orientation Motor Code Aux. Carrier

Auxiliary Carrier Option Note: If replacing a Lead Screw (8.), Band Magnet (12.) or Dust Band (1.) on an actuator that has an Auxiliary Carrier, be sure to add "DC ___" to the end of the configuration string when ordering. "DC" indicates the need for additional length and "___" indicates the measurement of space between carriers (in inches [SK] or millimeters [SM]) as indicated earlier in the configuration string.

Dual 180 Carrier Option Note: If equipped with the optional dual 180 carrier, add the letter "D" between the Model & Size and Stroke Length.

Drawing repeated for reference

NOTE: Items shaded cannot be field installed without proper assembly fixtures. For repair, return cylinder to Tolomatic



| ITEM | PART NO. OR CONFIG. CODE | DESCRIPTION | US CONV (SK) | | | | | | | METRIC (SM) | | | |
|------|--------------------------|-----------------------|--------------|-------|------|-------|------|-------|------|-------------|------|------|-------|
| | | | BN02 | BNL02 | SN02 | SNA02 | BN05 | BNL05 | SN01 | SM25* | SN12 | BN05 | BNL05 |
| 10. | 3415-1013 | T-NUT (US CONV) | 4 | 4 | 4 | 4 | 4 | 4 | | | | | |
| | 4415-1013 | T-NUT (METRIC) | | | | | | | 4 | 4 | 4 | 4 | |
| 11. | 3415-1342 | RAIL WAY | 2 | 2 | 2 | 2 | 2 | 2 | 2 | 2 | 2 | 2 | 2 |
| | NMBB3S15_SK_ | BAND MAGNET (US CONV) | 2 | 2 | 2 | 2 | 2 | 2 | 2 | 2 | 2 | 2 | 2 |
| 512. | NMBB3S15_SM_ | BAND MAGNET (METRIC) | A/R | A/R | A/R | A/R | A/R | A/R | A/R | A/R | A/R | A/R | A/R |
| | | | A/R | A/R | A/R | A/R | A/R | A/R | A/R | A/R | A/R | A/R | A/R |
| 13. | 3415-1141 | MACHINED WEDGE | 1 | 1 | 1 | 1 | 1 | 1 | 1 | 1 | 1 | 1 | 1 |
| 14. | 0605-1048 | SOCKET HEAD CAP SCREW | A/R | A/R | A/R | A/R | A/R | A/R | A/R | A/R | A/R | A/R | A/R |
| 15. | 3415-1322 | CONTACT BEARING | 2 | 2 | 2 | 2 | 2 | 2 | 2 | 2 | 2 | 2 | 2 |
| 16. | 3415-1024 | CARRIER WAY | 2 | 2 | 2 | 2 | 2 | 2 | 2 | 2 | 2 | 2 | 2 |
| 17. | 3415-1319 | UPPER CLAMP | 2 | 2 | 2 | 2 | 2 | 2 | 2 | 2 | 2 | 2 | 2 |
| | 4415-1319 | UPPER CLAMP | | | | | | | 2 | 2 | 2 | 2 | 2 |
| 18. | 3415-1455 | SET SCREW | 4 | 4 | 4 | 4 | 4 | 4 | 4 | 4 | 4 | 4 | 4 |
| | 4410-1017 | SET SCREW | | | | | | | 4 | 4 | 4 | 4 | 4 |
| 19. | 3415-1121 | MACHINED TUBE | 1 | 1 | 1 | 1 | 1 | 1 | 1 | 1 | 1 | 1 | 1 |
| | 4415-1121 | MACHINED TUBE | | | | | | | 1 | 1 | 1 | 1 | 1 |
| 20. | 3415-1047 | UPPER BAND RAMP | 2 | 2 | 2 | 2 | 2 | 2 | 2 | 2 | 2 | 2 | 2 |
| 21. | 2307-1021 | SOCKET HEAD CAP SCREW | 2 | 2 | 2 | 2 | 2 | 2 | 2 | 2 | 2 | 2 | 2 |
| | 3212-1025 | SOCKET HEAD CAP SCREW | | | | | | | 2 | 2 | 2 | 2 | 2 |
| 22. | 3415-1014 | BALL RETURN | 2 | 2 | 2 | 2 | 2 | 2 | 2 | 2 | 2 | 2 | 2 |
| 23. | 3415-1015 | RIGHT BALL RACE | 2 | 2 | 2 | 2 | 2 | 2 | 2 | 2 | 2 | 2 | 2 |
| 24. | 3415-1032 | LEFT BALL RACE | 2 | 2 | 2 | 2 | 2 | 2 | 2 | 2 | 2 | 2 | 2 |
| 25. | 3415-1025 | WIPER | 2 | 2 | 2 | 2 | 2 | 2 | 2 | 2 | 2 | 2 | 2 |
| 26. | 3415-2021 | MACHINED CARRIER | 1 | 1 | 1 | 1 | 1 | 1 | 1 | 1 | 1 | 1 | 1 |
| | 4415-1235 | MACHINED CARRIER | | | | | | | 1 | 1 | 1 | 1 | 1 |

| ITEM | PART NO. OR CONFIG. CODE | DESCRIPTION | US CONV (SK) | | | | | | | METRIC (SM) | | | |
|------|--------------------------|-----------------------|--------------|-------|------|-------|------|-------|------|-------------|------|------|-------|
| | | | BN02 | BNL02 | SN02 | SNA02 | BN05 | BNL05 | SN01 | SM25* | SN12 | BN05 | BNL05 |
| 27. | 3415-1323 | FLATHEAD CAP SCREW | 3 | 3 | 3 | 3 | 3 | 3 | 3 | | | | |
| | 4415-1012 | FLATHEAD CAP SCREW | | | | | | | | 3 | 3 | 3 | 3 |
| 28. | 1076-1101 | JAM NUT | 1 | 1 | | | | | | | 1 | | |
| | 1001-1322 | JAM NUT | | | 1 | 1 | 1 | 1 | 1 | 1 | 1 | 1 | 1 |
| 29. | 3415-1009 | BALL BEARING | 114 | 114 | 114 | 114 | 114 | 114 | 114 | 114 | 114 | 114 | 114 |
| 30. | 3415-1019 | BALL RETURN TUBE | 2 | 2 | 2 | 2 | 2 | 2 | 2 | 2 | 2 | 2 | 2 |
| 31. | 3415-2022 | CARRIER COVER | 1 | 1 | 1 | 1 | 1 | 1 | 1 | 1 | 1 | 1 | 1 |
| 32. | 3415-2024 | END CAP | 2 | 2 | 2 | 2 | 2 | 2 | 2 | 2 | 2 | 2 | 2 |
| 33. | 0910-1040 | SOCKET HEAD CAP SCREW | 4 | 4 | 4 | 4 | 4 | 4 | 4 | 4 | 4 | 4 | 4 |
| | 4415-1001 | SOCKET HEAD CAP SCREW | | | | | | | 4 | 4 | 4 | 4 | 4 |
| 34. | 3415-9059 | HEAD END KIT | 1 | 1 | 1 | 1 | 1 | 1 | 1 | | | | |
| | 4415-9055 | HEAD END KIT | | | | | | | 1 | 1 | 1 | 1 | 1 |
| 35. | 3415-1218 | MAGNET | 2 | 2 | 2 | 2 | 2 | 2 | 2 | 2 | 2 | 2 | 2 |
| | 1124-1092 | SPHERICAL WASHER | 1 | 1 | | | | | | | 1 | | |
| 36. | 3415-2014 | SPHERICAL WASHER | | | 1 | 1 | 1 | 1 | 1 | 1 | 1 | 1 | 1 |
| 37. | 3415-1109 | PLT BALL RETURN | 2 | 2 | 2 | 2 | 2 | 2 | 2 | 2 | 2 | 2 | 2 |
| 38. | 3415-1320 | BEARING SLEEVE | 1 | 1 | - | - | - | - | - | 1 | | | |
| 39. | 0910-1040 | SOCKET HEAD CAP SCREW | 4 | 4 | 4 | 4 | 4 | 4 | 4 | | | | |
| | 4905-1012 | SOCKET HEAD CAP SCREW | | | | | | | 4 | 4 | 4 | 4 | 4 |
| 40. | 3415-2042 | SLEEVE, TAPER | 1 | 1 | | | | | | | 1 | | |
| | 3415-2041 | SLEEVE, TAPER | | | 1 | 1 | 1 | 1 | 1 | 1 | 1 | 1 | 1 |
| | 3415-2043 | SLEEVE, STRAIGHT | 1 | 1 | | | | | | | 1 | | |

¹Available in Repair Kit No. 3415-9049

⁴Also included in nut bracket assembly (Item 9)

A/R = As Required

⁵Replacement Magnet Band Kit ordering method: **NMB B3S15 D SK [][][][] DC []**
(includes 2 magnet bands)

EXAMPLE: **NMB B3S15 D SK 211-25 DC 7**
Lead Screw Model & Size Stroke Length Aux. Carrier

Auxiliary Carrier Option Note: If replacing a Lead Screw (8.), Band Magnet (12.) or Dust Band (1.) on an actuator that has an Auxiliary Carrier, be sure to add "DC ___" to the end of the configuration string when ordering. "DC" indicates the need for additional length and "___" indicates the measurement of space between carriers (in inches [SK] or millimeters [SM]) as indicated earlier in the configuration string.

Dual 180 Carrier Option Note: If equipped with the optional dual 180 carrier, add the letter "D" between the Model & Size and Stroke Length.

Main Unit Disassembly Instructions**1. Remove Motor Hardware and Dust Band.**

Remove any motor, REVERSE PARALLEL, or gearhead hardware from the drive end of actuator. Remove band clamp fasteners(29) and remove band both band clamps(17). Remove the carrier end cap fasteners(33) and end caps(32) from the carrier(26). Slide out the carrier cover(31) and remove the dust band(1).

2. Remove the Non-Drive end Head and Bearing.

Remove the non-drive end cap(34). Remove the non-drive end leadscrew nut(28), while holding the leadscrew from turning at the drive end. Do not allow the actuator carrier to bottom out on end of stroke. Remove head fasteners(4) from the non-drive end of actuator, remove that head(5). It is a slip fit between the bearing and leadscrew journal, but it may be necessary to 'pull' the head off w/ a puller tool as there may be some residual loctite holding the bearing on the leadscrew. Remove the bearing(15) from head by removing the snap ring(3). *Note that on BN02 size, there is a bushing(38) installed in the bearing. Press the bushing out as needed.

3. Remove Leads Screw Assembly.

Remove carrier fasteners(27). Remove drive-end head fasteners(4), and remove leadscrew/head sub-assembly from actuator. Ballnut Style: *Caution is required if removal of the nut or leadscrew is required. Contact the factory for available parts and procedures. Plastic/Bronze Nut Style: The leadscrew may be threaded out of the nut assembly at this point. The nut and nut coupler are pinned and secured w/ Loctite at the factory. If nut is worn, and new nut assembly must be ordered.

4. Remove Lead Screw and Bearing from Head.

Secure the body of the leadscrew in a machinist vice or equivalent smooth jaw vice, then remove the locknut(2). Support the taper bushing (40) if possible and press the leadscrew out of bearing and bushing. The bearing is a press fit on screw journal, and the bushing locked on by means of a mating tapered interface. The snap ring(3) and the bearing(15) can now be removed from the head.

Main Unit Assembly Instructions**1. Sub Assemble Head and Bearing to Lead Screw Assembly.**

Install the bearing(15) into the head(5) and install snap ring(3). Position over the leadscrew and nearest the drive end, the longer spacer(6) and the bumper(7). Position taper bushing(40), then bearing/head over leadscrew. It is necessary to press the bearing onto the leadscrew, ensure that the load is only applied to the inner race of the bearing. If not equipped to perform this it will be necessary to purchase this pre-assembled at the factory. Apply loctite 242 to the exposed threads of the leadscrew and install the spherical washer(36) and locknut(2) onto the threads of the leadscrew. Torque the locknut to value listed below, while leadscrew is secured in a machinist vice, or other smooth jaw vice

BN02 Ball Nut 200 in-lbs

All other Nut Types 350 in-lbs

2. Assemble Non-Drive end Head.

Slip bearing into the head, and install the snap ring, flat side of ring toward the bearing. *on BN02, apply retaining compound, Loctite 641 to the journal bushing and ID of the bearing. Install the bushing into the bearing such that the flange portion of the bushing will be toward end of actuator in the assembled state.

3. Assemble Lead Screw Assembly into the Tube.

Grease Leadscrew on both sides of Nut Assembly with a thin film of appropriate grease: either CHRISTOLUBE MCG 303, for solid nut actuators; or MOBIL HP MULTIPURPOSE PREMIUM GREASE for Ball Nut actuators.

Install Leadscrew/Nut assembly in the tube such that as viewed from the motor end, the wedge side of tube is to the left.

4. Install Idle Head and Tighten Heads to Tube.

Attach and tighten the carrier(25) to the nut bracket(9). *On Auxiliary Carrier units, attach the nut bracket to the carrier nearest the motor end of the actuator. Attach the drive end Head to the end of Tube with four SHCS fasteners. Leave loose.

Position bumper and short spacer(if applicable) over the leadscrew and into the tube at the non-motor end. Attach the idle end head to the tube with 4 SHCS sliding the bearing over the journal of the leadscrew. Leave loose.

Move Carrier Assembly to motor-end of tube and tighten head bolts to 105 in-lbs. Support the actuator on the tube such that the head is free to float while tightening the head fasteners.

Move Carrier Assembly to non-motor end of tube and torque to 105 in-lbs. Support the actuator on the tube, such that the head is free to float while tightening the head fasteners.

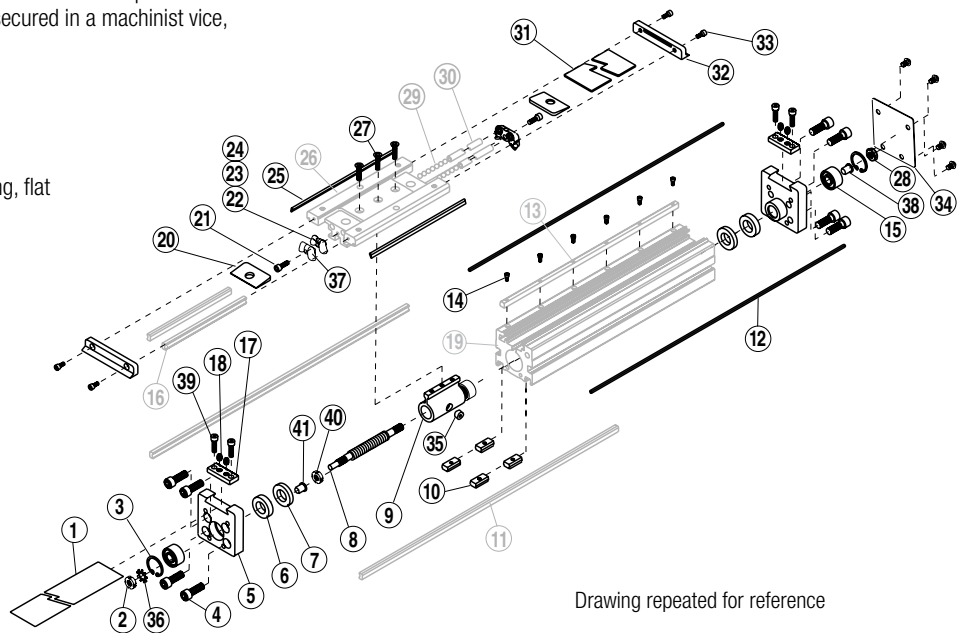
5. Secure non-motor end of leadscrew.

Apply loctite 242 to the threads on the leadscrew and install the hexnut. Torque nut to 6-8 in-lbs.

6. Lubricate Ballways and install Dust Band.

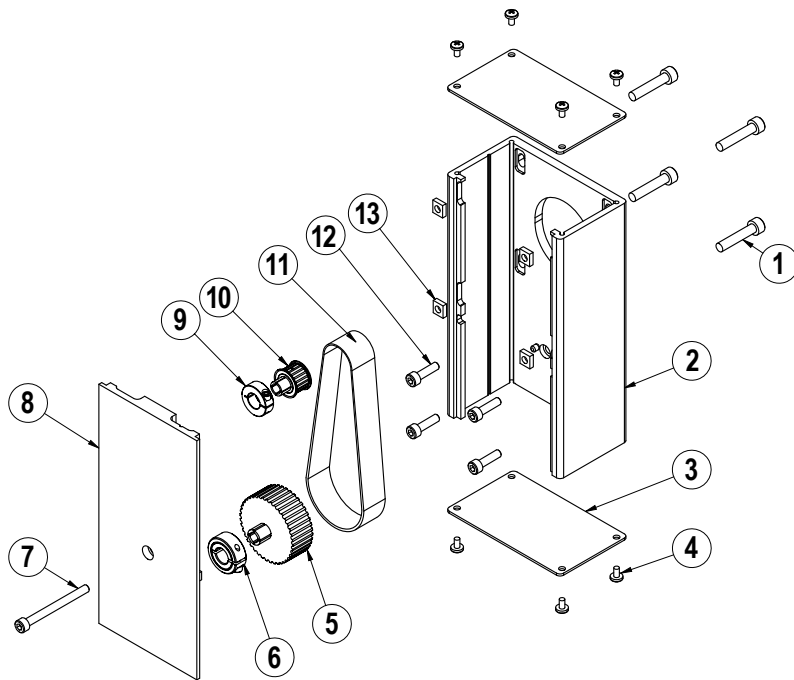
Lubricate full length of the ballways(11) with Mobil HP grease. Install Dust Band(1) over Carrier(26) centering it along the length of the actuator. Slide the carrier cover(31) into slots of the carrier, and secure end caps(32) to the carrier. With tin snips cut ends as need such that dust band is 1/16" in from ends of heads. Install the band clamps(17) to the heads, and tighten down the set screws(18) locking the band in place.

For special lubrication option grease, email help@tolomatic.com



Drawing repeated for reference

Reverse Parallel (RP) Mounting Option



| ITEM | PART NO. | DESCRIPTION | QTY. |
|------|------------|---------------------------|------|
| ◊1. | CONFIGURED | MOTOR FASTENER | 4 |
| ◊2. | CONFIGURED | RP HOUSING | 1 |
| ◊3. | CONFIGURED | RP HOUSING END CAP | 2 |
| ◊4. | CONFIGURED | END CAP SCREW | 8 |
| ◊5. | CONFIGURED | DRIVE SHAFT PULLEY | 1 |
| ◊6. | CONFIGURED | COLLAR CLAMP, DRIVE SHAFT | 1 |
| ◊7. | CONFIGURED | RP COVER FASTENER | 1 |
| ◊8. | CONFIGURED | RP COVER | 1 |
| ◊9. | CONFIGURED | COLLAR CLAMP, MOTOR | 1 |
| ◊10. | CONFIGURED | MOTOR PULLEY | 1 |
| ◊11. | CONFIGURED | BELT | 1 |
| ◊12. | CONFIGURED | RP PLATE FASTENER | 4 |
| ◊13. | CONFIGURED | SQUARE NUT | 4 |

◊ Part numbers varies depending on YMH (Your Motor Here). Contact help@tolomatic.com for replacement part numbers.

Disassembly Instructions

1. Remove End Caps (3), and release the tension on the Belt (11) by breaking loose the motor fasteners (1).
2. Remove the RP Cover (8).
3. The Belt (11) can now be removed along with the Motor.
4. Remove both Pulleys (10) and (5) from their respective shafts.
5. Remove the RP Housing (2) from the actuator head by removing the Fasteners (12).

Assembly Instructions

Note: Apply Loctite #242 to all fasteners upon installation

1. Install RP Housing (2) onto the actuator Head with Fasteners (12).
Note: If the RP housing has a bearing in it do not fully tighten the fasteners at this time. Instead temporarily install the RP cover (8) onto the RP case, positioning the bearing over the leadscrew shaft. Hold the cover in place while tightening all the Fasteners (12) so that the case is snug. Then remove the RP cover and finish tightening the fasteners
2. Install the Motor to the RP Housing with Fasteners (1) and Square Nuts (13). Do not tighten the fasteners at this time.
3. Locate the Belt (11) over the Pulleys (10) and (5) and slide both pulleys over their respective shafts. Tighten each pulley to its shaft with the Collar Clamps (9) and (6).

4. Tension the Belt (11) by pulling the motor away from the drive shaft with the appropriate tension force shown in the chart below. While tensioning, the actuator should be positioned so the weight of the motor does not affect the belt tension. Tighten the Motor Fasteners (1) while the tensioning force is applied to the motor.

| SMALLEST SHAFT DIAMETER (Motor or Actuator) | | TOTAL WEIGHT TO APPLY | |
|--|-------------------|-----------------------|--------|
| Inches | mm | lbs | kgs |
| 0.18 to 0.259 | 4.572 to 6.579 | 13 | 5.902 |
| 0.260 to 0.499 | 6.604 to 12.675 | 22 | 9.988 |
| 0.500 to 0.625 | 12.7 to 15.875 | 31 | 14.074 |
| 0.625 and larger | 15.875 and larger | 40 | 18.160 |

Additional tips are found in Tolomatic [Electric Actuator Motor Mounts Technical Note # 3600-4203](#).

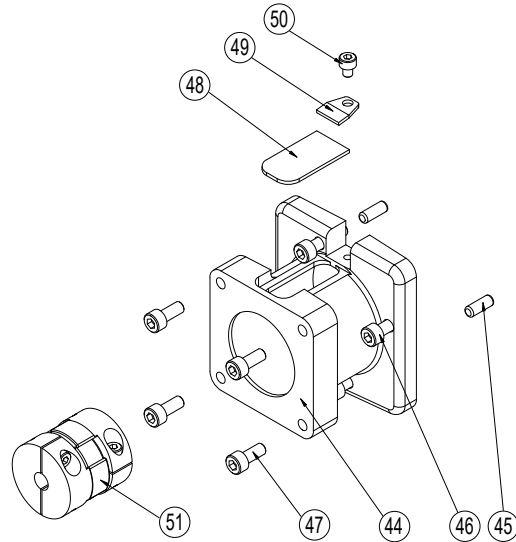
5. Verify that there is clearance between the inside of the RP case and each pulley. Verify the pulleys are aligned to each other.
6. Position the Cover (8) in the mating slot of the RP case and install the Fasteners (7) to hold it in place. Take care not to overtighten. If the cover is deflected, it can interfere with the leadscrew.
7. Install both End Caps (3) with the Screws (4) to finalize the assembly.

In-Line (LMI) Mounting Options

| ITEM | PART NO. | DESCRIPTION | QTY |
|------|------------|--------------|-----|
| ◊44. | CONFIGURED | MOTOR SPACER | 1 |
| ◊45. | CONFIGURED | DOWEL PIN | 2 |
| ◊46. | CONFIGURED | SCREW | 4 |
| ◊47. | CONFIGURED | SCREW | 4 |
| ◊48. | CONFIGURED | COVER | 1 |
| ◊49. | CONFIGURED | CLAMP | 1 |
| ◊50. | CONFIGURED | SCREW | 1 |
| ◊51. | CONFIGURED | COUPLER | 1 |

◊ Part number varies depending on YMH (Your Motor Here).
Contact help@tolomatic.com for replacement part number.

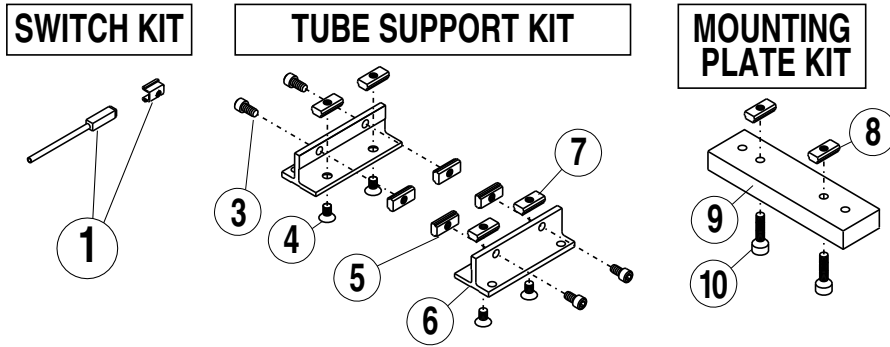
A replacement Motor Mount Kit contains all parts listed above.



Replacement Motor Mount Kits ordering method: **MMK B3S15** **LMI YM**

EXAMPLE: MMK B3S15 BN025 LMI YM00TBDO

Motor Mount Kit Model & Size Lead Screw Motor Orientation Motor Code



Optional Accessories Parts Listing

| ITEM | DESCRIPTION |
|---|---|
| 1. | SWITCH KIT |
| CONFIG. CODE ORDERING | |
| CODE | DESCRIPTION |
| BT | SWITCH KIT, REED, FORM C, 5M |
| BM | SWITCH KIT REED, FORM C, QUICK DISCONNECT |
| RT | SWITCH KIT, REED, FORM A, 5M |
| RM | SWITCH KIT, REED, FORM A, QUICK DISCONNECT |
| CT | SWITCH KIT, TRIAC, 5M |
| CM | SWITCH KIT, TRIAC, QUICK DISCONNECT |
| KT | SWITCH KIT, HALL-EFFECT, SINKING, 5M |
| KM | SWITCH KIT, HALL-EFFECT, SINKING, QUICK DISCONNECT |
| TT | SWITCH KIT, HALL-EFFECT, SOURCING, 5M |
| TM | SWITCH KIT, HALL-EFFECT, SOURCING, QUICK DISCONNECT |
| NOTE: Switch bracket, set screw, & mating QD cable is included | |

| ITEM | US CONV (SK) | METRIC (SM) | DESCRIPTION | QTY. |
|--------------------|--------------|-------------|-------------------------------------|------|
| TUBE SUPPORT KIT | | | | |
| | 3415-9006 | 4415-9006 | KIT INCLUDES ALL PARTS LISTED BELOW | |
| 3 | 0801-1251 | 4415-1005 | SHCS, 10-24 X .44/ M5 X 10 | 4 |
| 4 | 3415-1046 | 4415-1014 | SFHCS, 10-24 X .38/ M5 X 10 | 4 |
| 5 | 3415-1013 | 4415-1013 | B3S20 NUT | 4 |
| 6 | 3415-1044 | 3415-1044 | TUBE SUPPORT | 2 |
| 7 | 3415-1013 | 4415-1013 | B3S20 NUT | 4 |
| MOUNTING PLATE KIT | | | | |
| | 3415-9057 | 4415-9031 | KIT INCLUDES ALL PARTS LISTED BELOW | |
| 8 | 3415-1013 | 4415-1013 | T-NUT | 2 |
| 9 | 3415-1332 | 3415-1332 | MOUNTING PLATE 1/2" | 1 |
| | 3415-1333 | 3415-1333 | MOUNTING PLATE 1" | 1 |
| 10 | 0801-1251 | 8150-1070 | SHCS (1/2" PLATE) | 2 |
| | 1310-1015 | 2164-1020 | SHCS (1" PLATE) | 2 |

Switch Ordering NOTES

To order field retrofit switch and hardware kits for all Tolomatic actuators: SW (Then the model and bore size, and type of switch required)



REPLACEMENT SWITCH (Hardware and Form A Reed switch with 5 meter lead for 1" size B3S actuator)

Mounting hardware is required if replacing switch for any actuator manufactured before 7/1/97

OPTIONAL ACCESSORY ASSEMBLY INSTRUCTIONS

- TUBE SUPPORTS. Four T-Nuts (5, 7) are required on each side of the Tube, two T-Nuts on bottom of Tube and two in lower slots on tube sides. Tube Supports should be secured at the required distances determined for the application to prevent Tube deflection. Apply Loctite #242 to Screws (3, 4) and secure Tube Supports (6) to Tube aligning holes in T-Nuts with holes in Tube Supports.
- Switches. Secure Switch (1) to magnet side of Tube with Switch Clamp (2) and Set Screw.
- SWITCHES

NOTE: Form A Reed Switches should not be used in TTL logic circuits. A voltage drop caused by the L.E.D. indicator will result. For applications where TTL circuits are used, please contact the factory.

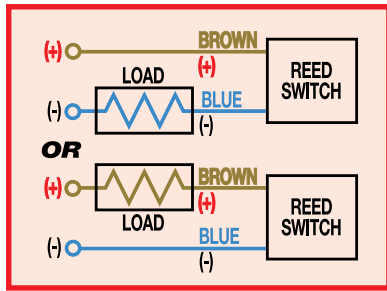
WARNING: An ohmmeter is recommended for testing Reed Switches. NEVER use an incandescent light bulb as a high current rush may damage the switch.

Reed and TRIAC switches are only recommended for signalling position, not directly powering solenoids. For shifting a solenoid, a relay or resistor is recommended between it and the Reed Switch. Switch ratings must not be exceeded at any time.

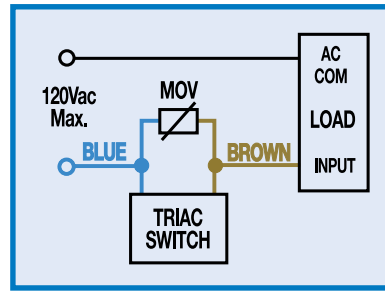
NOTE: For Hall Effect Switch Magnet, be sure the S pole of the magnet (indicated with black dot) is facing toward the switch (down).

WIRING DIAGRAMS

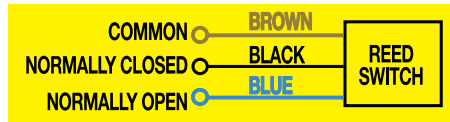
R T & R M DC REED, FORM A



C T & C M AC REED, TRIAC

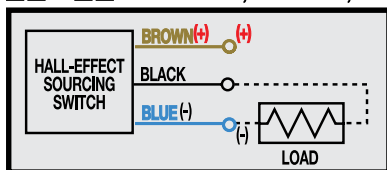


B T & B M DC REED, FORM C

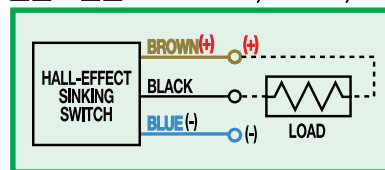


Some actuators may require switch mounting on a specific side of the assembly. Call Tolomatic for details.

T T & T M HALL-EFFECT, SOURCING, PNP



K T & K M HALL-EFFECT, SINKING, NPN



INSTALLATION INFORMATION



⚠ THE NOTCHED FACE OF THE SWITCH INDICATES THE SENSING SURFACE AND MUST FACE TOWARD THE MAGNET.

REPLACEMENT OF QD SWITCHES MANUFACTURED BEFORE JULY 1, 1997:

It will be necessary to replace or rewire the female end coupler.



Christo-Lube® is a registered trademark of Lubrication Technology, Inc., www.lubricationtechnology.com
 Loctite® is a registered trademark of the Loctite Corporation, www.loctite.com
 Magnalube®-G is a registered trademark of the Carleton-Stuart Corporation, www.magnalube-g.com



COMPANY WITH QUALITY SYSTEM CERTIFIED BY DNV = ISO 9001 =

3800 County Road 116, Hamel, MN 55340 USA
 http://www.Tolomatic.com • Email: Help@Tolomatic.com
 Phone: (763) 478-8000 • Fax: (763) 478-8080 • Toll Free: 1-800-328-2174

All brand and product names are trademarks or registered trademarks of their respective owners. Information in this document is believed accurate at time of printing. However, Tolomatic assumes no responsibility for its use or for any errors that may appear in this document. Tolomatic reserves the right to change the design or operation of the equipment described herein and any associated motion products without notice. Information in this document is subject to change without notice.